

OP-COM USB driver installation guide

In order to use OP-COM on your PC, you have to install the USB driver for the interface. After you have successfully installed OP-COM to your computer, please plug the interface into any free USB port on your PC. A message will appear in the lower right corner on your screen, showing that your computer recognized the interface.



A few seconds later, a „New hardware wizard” will appear, with the following window:



Please choose „No, not this time”, and click on the [Next] button.

Then a following window will appear, where please choose:

„Install from a list or specific location (Advanced)”

Then click on the [Next] button.

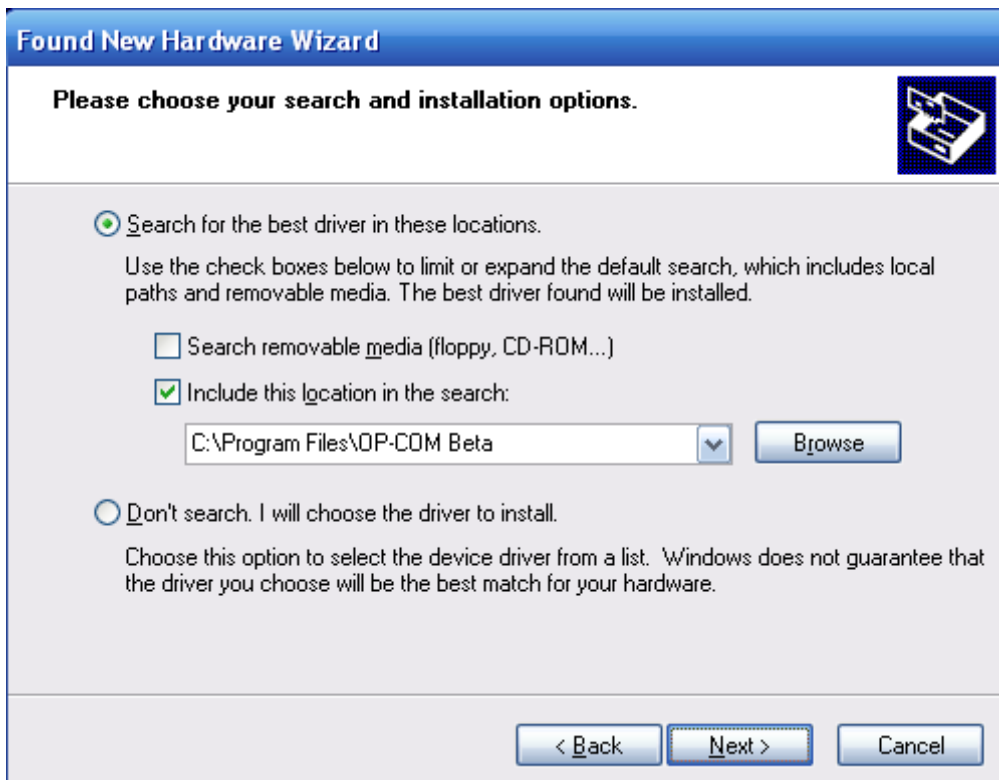


Please select the **„Including this location in the search”** option only.

Then choose the directory, where OP-COM is installed.

The default directory is **„C:\Program Files\OP-COM Beta”**.

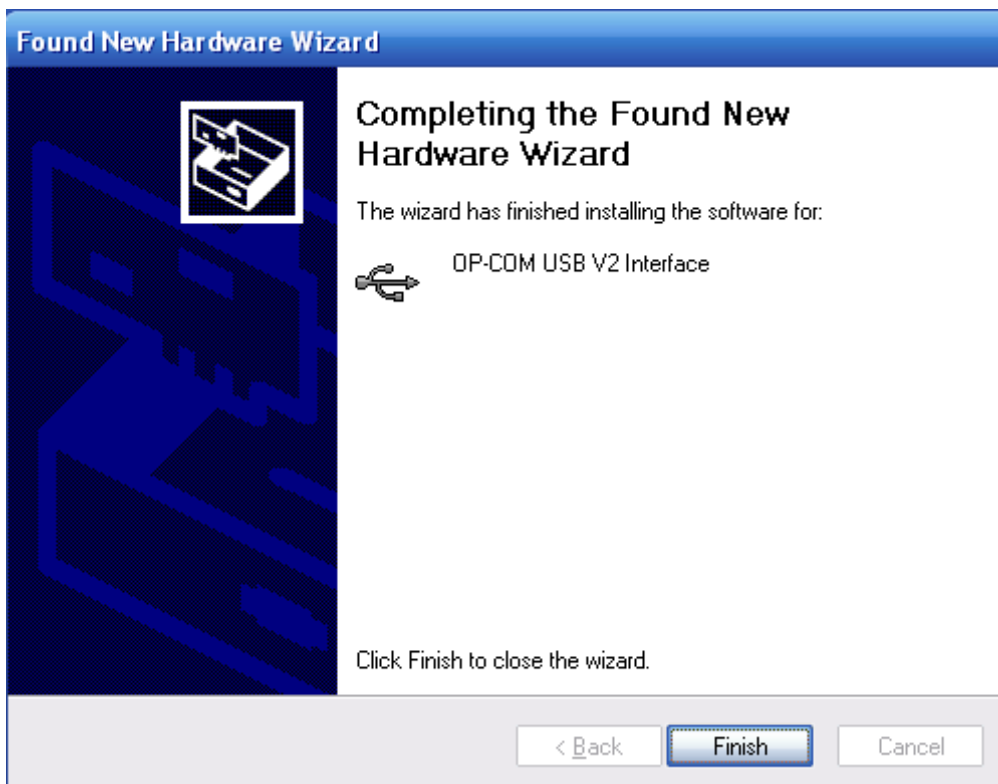
Then please click on the [Next] button.



After a few seconds later, the following windows **may** appear. This is because the USB driver of OP-COM is not certified by Microsoft. We always supply OP-COM with the latest USB driver, which is extensively tested, and this driver does not cause any problems. Please understand, that it takes some time to get the device driver certified by Microsoft, so hopefully, a later versions of OP-COM will include the certified driver. It depends on your Windows version, whether or not this window will appear. If it does, please click on the “**Continue Anyway**” button.



After a few seconds later, when the installation finished, the following window will appear.



Please click on the [**Finish**] button to complete the installation.

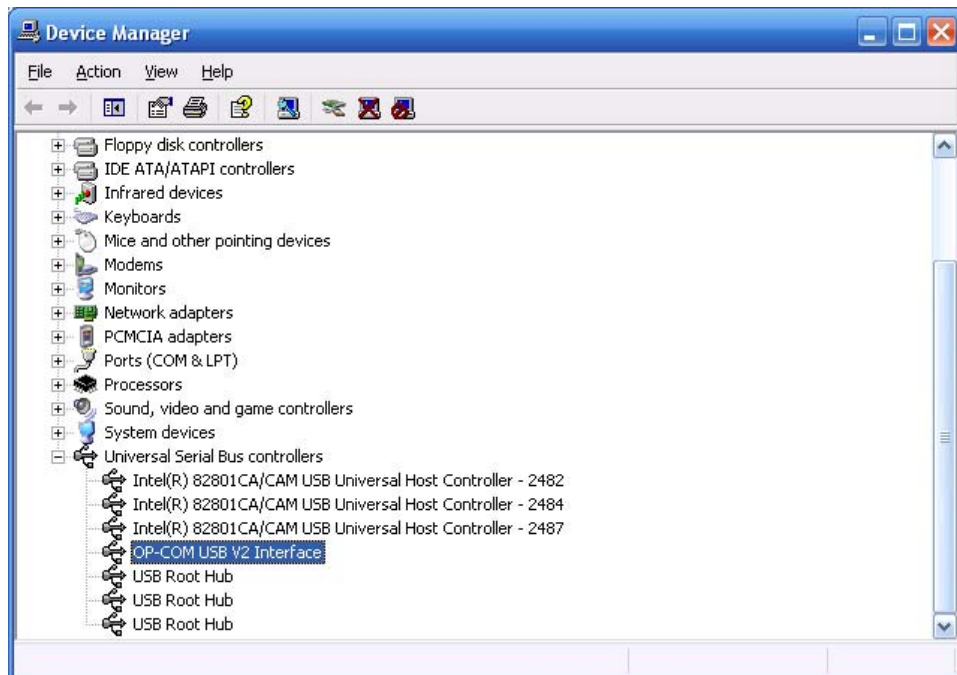
Congratulation, you have successfully installed the USB driver.

OP-COM USB driver installation guide © 2006 Autó-M3 Ltd.

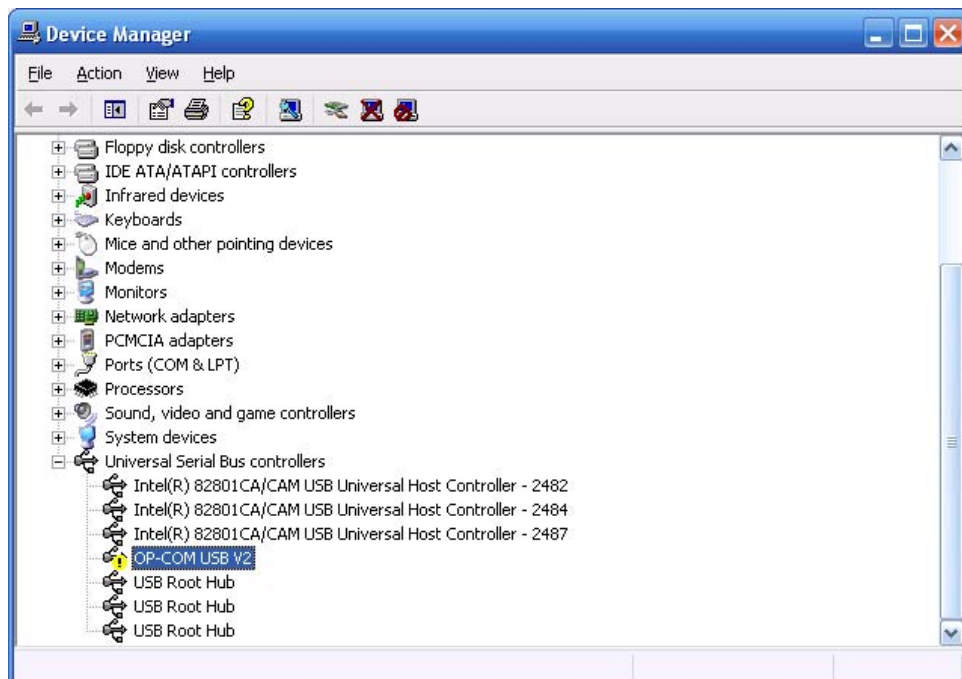
<http://www.vezerdiagnosztika.hu>

With the USB driver installed, OP-COM is ready to work.

You can easily verify the driver installation. If you see the following information in the Device Manager, you have successfully installed the driver.



If you see an exclamation point before the device name, then possibly something went wrong during the driver installation.



If you require any additional assistance installing the program, or the USB driver, please contact us by the following E-mail at

info@vezerdiagnosztika.hu

OP-COM USB driver installation guide © 2006 Autó-M3 Ltd.

<http://www.vezerdiagnosztika.hu>